

Premium in performances

35 years of satisfied customers



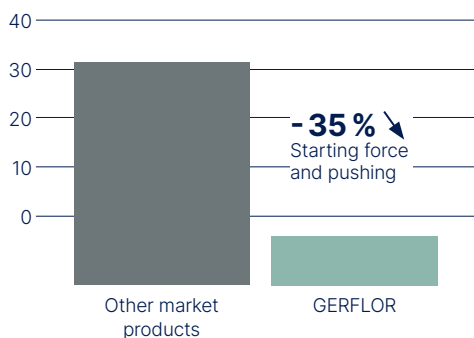
Unrivalled durability

- High density pressed wearlayer
- Pressed under 800 tons
- Immutables designs

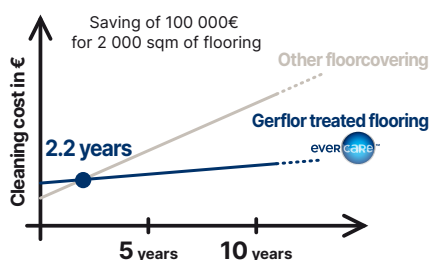


High resistance to heavy loads

- Double reinforcement for excellent dimensional stability
- Easy rolling



Lower maintenance costs



Indoor air quality

- A+ / Floorscore / M1 certified
- Phthalate-free
- Anti-bacterial activity: ISO 22196



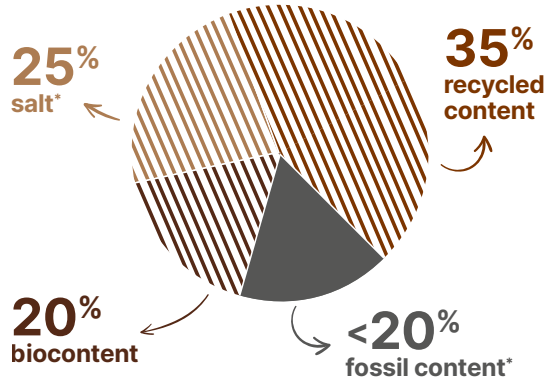
New collection Premium

More sustainable materials

80%

Biocontent, Mineral & Recycled

Premium contains 20% crop residues from responsible sources. We recycle discarded soy waste from the animal feed industry. The result: less fossil based material and less carbon.



Low carbon solution



Thanks to its improved composition, Premium emits 20%** less CO₂ than the average heterogeneous floorings.

A good choice to decarbonise your projects.

100% recyclable



Premium range is compatible with Gerflor's **Second Life programme** that is available in selected countries.

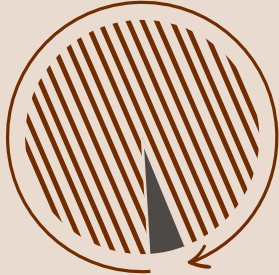
* Vinyl is made of two main ingredients : ethylen and salt.
** Based on life cycle assessment certified by UL for an average heterogeneous product.



To go a step forwards Premium Zero

Towards a world with 0 fossil extraction

More than 95% of natural, recycled and bio-attributed content.
Available on demand.



A range as powerful as ever

35 years of satisfied customers



“

With 600 000 passengers per year, plus their luggage and carts, this floor covering offers the advantage of standing up to heavy traffic while remaining easy to maintain.

Pau-Pyrénées Airport, France

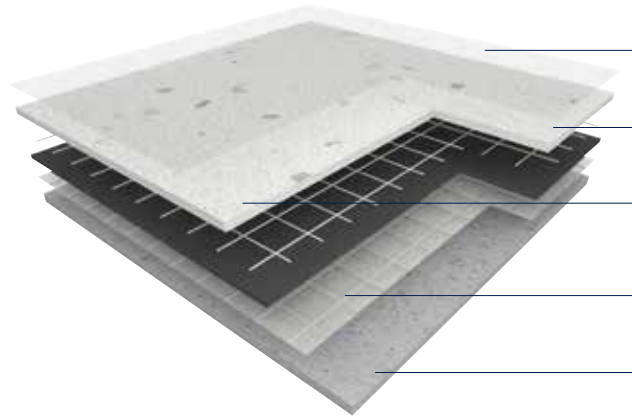
For 20 years, this mass-coloured surface has always been satisfactory. We've had no problem with tears, scratches or wheel marks.

Hospital in Lons-le-Saunier, France

”

A unique construction

for unrivalled strength and durability



- Evercare™ surface treatment stain barrier, **easy maintenance** & hygiene
- High density **pressed wearlayer** pressed under 800 tons for an unrivalled durability
- Matt effect** for a modern look
- Double glass fiber grid** for the best dimensional stability (acoustic only)
- VHD foam** sound insulation (acoustic only)



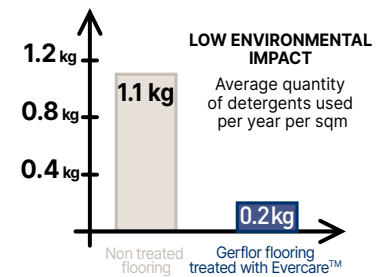
High resistance to heavy loads

Tested with **TENTE** teams (specialists in wheels and castors, particularly in hospitals), Premium offers better rolling ease (dynamic indentation) than other products on the market.



No metallization required

= **WATER & DETERGENT SAVINGS**
10x fewer cleaning products are needed to maintain Gerflor floors compared to untreated floors



Recognized Certifications

- ✓ **REACH** compliant raw materials and phthalate-free**
- ✓ **Indoor air quality:** < 10µg certified by Floorscore (after 28 days)
- ✓ **Carbon impact less than 11 kg eq CO₂/m²** (EPD available)
- ✓ **Certified ISO 21702:** Antiviral activity (Human Coronavirus)

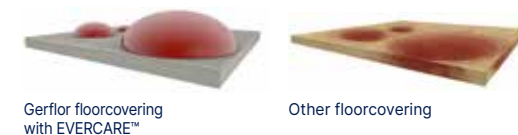
* REACH: Regulation concerning the Registration, Evaluation, Authorisation and Restriction of Chemicals
 ** Excluding recycled content



Matte surface, easy to maintain

The patented EVERCARE™ technology ensures high stain resistance (Betadine, eosin, marker, etc.) as well as easy maintenance. This significantly reduces maintenance costs and decreases environmental impact.

Stain shield



Stain test



Extreme durability

100% pure homogeneous wearlayer for superior abrasion and traffic resistance as well as long lasting colors.

100% pure vinyl pressed wearlayer

Premium

High density pressed wearlayer



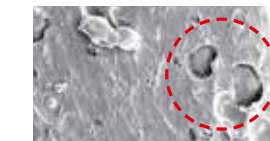
- > 1 mm
- Pressed under 800 tons
- 100 % PVC
- No transparent wearlayer

(1) Identical scale, enlarged 200 times

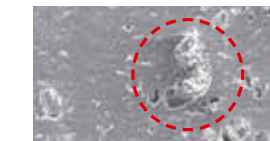
Other flooring⁽¹⁾



Printed flooring with transparent wearlayer
 Air bubbles: dirt traps



Homogeneous flooring
 Fillers: fragile and subject to scratches



Coated flooring
 Irregular density: dirt traps



Rubber flooring
 Porous and elastic: lower wear resistance and difficult to maintain

Wear test

| | Other floorcovering | Gerflor Premium |
|---|---------------------|-----------------|
| 0 cycle / new product | | |
| After 1000 cycles equivalent to very heavy traffic use after 5 years | | |
| After 2000 cycles equivalent to very heavy traffic use after 10 year | | |

Nature, an infinite source of inspiration

The endless inspiration of Nature contrasts with the fragility of its resources. This is why our range is evolving towards a **more responsible composition**, without altering the unique qualities that define Premium.

Durable and elegant, our new collection reveals **resolutely natural shades**: the subtle freshness of eucalyptus, the deep warmth of ochre, the shimmering serenity of aqua, and the luminous neutrality of sand. This timeless color palette perfectly embodies the **iconic durability** of Premium.



8 designs



Brazilia,
vibrant chromatics revisited granite

NEW Neoterra,
terrazzo inspiration with a touch of light

Metallica,
sophisticated, crystal-clear radiance

Poesy,
softness and delicacy with metallic sheen

Indiana,
vibrant, subtly contrasting faux smooth finish

Osmoz,
timeless, nuanced & blended shades

Neopolis,
rough and deep, to reveal an urban look

NEW Cocoon,
serene palette enhancing the beauty of recycled fibers

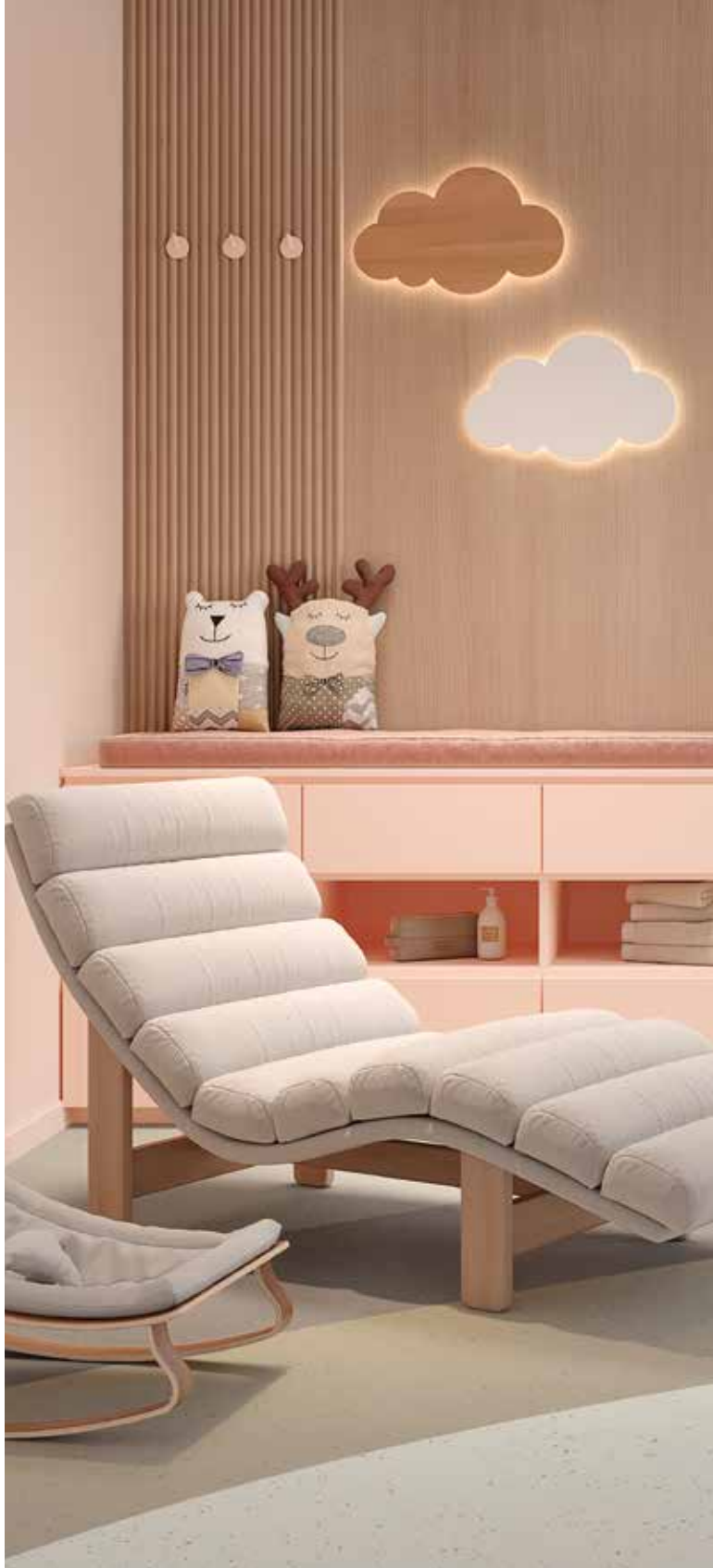
Premium in harmonie

Floors, wall covering & wall protections



Cocoon

Serene palette enhancing the beauty of recycled fibers



COCOON - 0032 Satin



COCOON - 0030 Crinolin



COCOON - 0027 Muslin



COCOON - 0028 Organza



COCOON - 0029 Flannel

Poesy

Softness and delicacy with metallic sheen



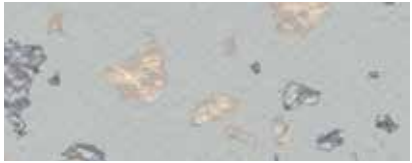
POESY - 2747 Ballade



POESY - 2151 Sonate



POESY - 8621 Ode



POESY - 2750 Ellipse



POESY - 2152 Octave



POESY - 8627 Allegorie



POESY - 2751 Slam



POESY - 2748 Refrain



POESY - 2501 Rhapsody



POESY - 2752 Litote



POESY - 2749 Lyrique



POESY - 8626 Rime



Neoterra

Terrazzo inspiration with a touch of light



NEOTERRA - 4207 Prato



NEOTERRA - 4206 Lazuli



NEOTERRA - 4205 Dorata



NEOTERRA - 4208 Soraya



Indiana

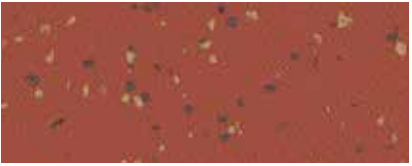
Vibrant, subtly contrasting faux smooth finish



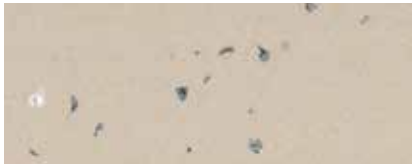
INDIANA - 4052 Calero



INDIANA - 4001 Ofu



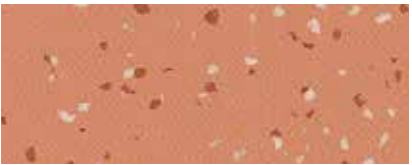
INDIANA - 4051 Maraca



INDIANA - 4343 Tokelau



INDIANA - 4009 Tufoa



INDIANA - 4050 Comores



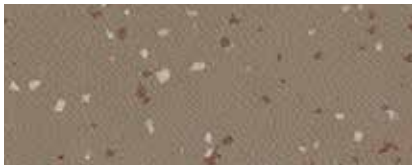
INDIANA - 8150 Bali



INDIANA - 4002 Manua



INDIANA - 4049 Kilmia



INDIANA - 4053 Diwaran



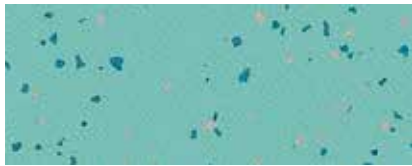
INDIANA - 4047 Okuza



INDIANA - 4048 Malabo



INDIANA - 8226 Fidji



INDIANA - 4046 Cubagua



INDIANA - 4045 Dalupiri



INDIANA - 4003 Tao



INDIANA - 4476 Wattaru



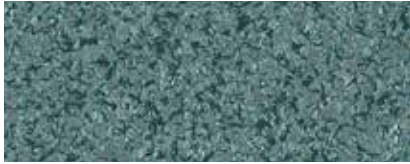
INDIANA - 7517 Faroe



INDIANA - 8837 Songo

Metallica

Sophisticated, crystal-clear radiance



METALLICA - 0062 Beyla



METALLICA - 9753 Energy



METALLICA - 0064 Sudri



METALLICA - 0061 Eldir



METALLICA - 9745 Cosmic



METALLICA - 8257 Nyx



METALLICA - 0060 Dellig



METALLICA - 0063 Narfi



METALLICA - 2746 Ymir



Osmoz

Timeless, nuanced & blended shades



OSMOZ - 4378 Igloo



OSMOZ - 4349 Angora



OSMOZ - 4364 Ivory



OSMOZ - 4365 Alpaga



OSMOZ - 4379 Koudou



OSMOZ - 4384 Barbadine



OSMOZ - 3792 Storm Grey



OSMOZ - 4380 Awara



OSMOZ - 4383 Jasmin



OSMOZ - 3791 Slate Grey



OSMOZ - 4381 Rozelle



Osmoz - 4382 Cyclades



OSMOZ - 7737 Pepper Grey



OSMOZ - 4351 Greige



Brazilia

Vibrant chromatics revisited granite

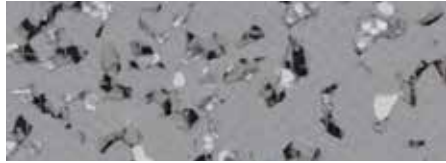


Neopolis

Rough and deep, to reveal an urban look



NEOPOLIS - 2741 Brooklyn



NEOPOLIS - 2740 Harlem Soft



NEOPOLIS - 2742 Times Square



NEOPOLIS - 2744 Queens Soft



NEOPOLIS - 2743 Central Park



NEOPOLIS - 2745 Plaza

Premium Collection

| Design | Colour | Code | Acoustic | LRV | NCS | | |
|----------|---------|-----------|----------|------|-----------|-----------|-----------|
| Brazilia | | Alvorada | 0051 | ● | 51,5 | 2010-Y30R | |
| | | Aracaju | 0058 | | 15,6 | 4040-B | |
| | | Barueri | 0054 | | 29,9 | 0560-Y90R | |
| | | Boa Vista | 8386 | ● | 63,7 | 1002-Y50R | |
| | | Ceara | 3709 | | 30,4 | 4005-R80B | |
| | | Limeira | 0053 | | 62,2 | 0560-Y | |
| | | Maceio | 4477 | | 35,7 | 2030-B10G | |
| | | Natal | 0056 | | 33,2 | 3030-G20Y | |
| | | Olinda | 0052 | | 37 | 1060-Y40R | |
| | | Paraiba | 3707 | | 10,1 | 7005-R80B | |
| Cocoon | | Recife | 8736 | ● | 54,8 | 2005-R80B | |
| | | Teresina | 0055 | | 13,4 | 3050-R | |
| | | Crinolin | 0030 | | 35,8 | 4005-Y50R | |
| | | Flannel | 0029 | | 31,1 | 4005-R80B | |
| | | Muslin | 0027 | ● | 46,7 | 2500-N | |
| | | Organza | 0028 | | 60,1 | 2002-Y | |
| | | Satin | 0032 | ● | 43,5 | 3005-Y50R | |
| | Indiana | | Bali | 8150 | | 39,2 | 3005-Y50R |
| | | | Calero | 4052 | ● | 37,3 | 3020-Y20R |
| | | | Comores | 4050 | | 28,9 | 3030-Y60R |
| | | Cubagua | 4046 | | 39,5 | 2030-B60G | |
| | | Dalupiri | 4045 | | 49,7 | 2010-G60Y | |
| | Diwaran | 4053 | ● | 20,2 | 6010-Y10R | | |

| Design | Colour | Code | Acoustic | LRV | NCS | |
|-----------|--------|---------|----------|------|-----------|-----------|
| Indiana | | Faroe | 7517 | | 20,4 | 6010-G30Y |
| | | Fidji | 8226 | ● | 35,6 | 3502-Y |
| | | Kilmia | 4049 | | 31,3 | 2060-Y30R |
| | | Malabo | 4048 | | 46,8 | 2040-Y20R |
| | | Manua | 4002 | ● | 63 | 1502-B |
| | | Maraca | 4051 | | 14 | 4040-Y80R |
| | | Ofu | 4001 | ● | 88,7 | 0502-Y |
| | | Okuza | 4047 | ● | 55,3 | 1515-R90B |
| | | Songo | 8837 | | 7,3 | 8000-N |
| | | Tao | 4003 | | 27,5 | 4502-B |
| Metallica | | Tokelau | 4343 | ● | 46,7 | 2005-Y50R |
| | | Tufoa | 4009 | ● | 66,3 | 1005-Y20R |
| | | Wattaru | 4476 | | 12,4 | 5030-R90B |
| | | Beyla | 0062 | | 21,3 | 5010-B90G |
| | | Cosmic | 9745 | | 28,4 | 5502-B |
| | | Dellig | 0060 | | 9 | 8010-R90B |
| | | Eldir | 0061 | | 22 | 4020-B |
| | | Energy | 9753 | ● | 56,3 | 2502-G |
| | | Narfi | 0063 | | 21,2 | 6010-Y10R |
| | | Nyx | 8257 | | 28 | 4030-Y20R |
| | Sudri | 0064 | ● | 51,2 | 2005-Y20R | |
| | Ymir | 2746 | | 23,9 | 5030-Y50R | |

| Design | Colour | Code | Acoustic | LRV | NCS | | |
|----------|------------|--------------|----------|------|-----------|-----------|--------|
| Neopolis | | Brooklyn | 2741 | | 14,9 | 7502-B | |
| | | Central Park | 2743 | ● | 52,3 | 2005-Y30R | |
| | | Harlem Soft | 2740 | | 30 | 4500-N | |
| | | Plaza | 2745 | | 53,8 | 2002-B | |
| | | Queens Soft | 2744 | | 29,4 | 4005-Y50R | |
| | | Times Square | 2742 | | 14,9 | 7005-Y50R | |
| | | Dorata | 4205 | ● | 73,8 | 0502-Y | |
| | Neoterra | | Lazuli | 4206 | ● | 77,3 | 0502-Y |
| | | | Prato | 4207 | | 76,4 | 0502-Y |
| | | | Soraya | 4208 | | 77 | 0502-Y |
| | | Alpaga | 4365 | ● | 52,2 | 2002-Y | |
| Osmoz | | Angora | 4349 | ● | 42,2 | 3005-Y50R | |
| | | Awara | 4380 | | 27,8 | 3020-Y60R | |
| | | Barbadine | 4384 | | 51,1 | 2040-Y10R | |
| | | Cyclades | 4382 | ● | 20,2 | 4030-B | |
| | | Greige | 4351 | | 25,8 | 5005-Y50R | |
| | | Igloo | 4378 | | 60 | 1502-B | |
| | | Ivory | 4364 | ● | 61,1 | 1502-Y | |
| | | Jasmin | 4383 | | 38,5 | 3020-G20Y | |
| | | Koudou | 4379 | | 34,6 | 3010-Y30R | |
| | | Pepper Grey | 7737 | | 9,4 | 8000-N | |
| | Rozelle | 4381 | | 17,1 | 4040-Y90R | | |
| | Slate Grey | 3791 | ● | 21,7 | 5500-N | | |
| | Storm Grey | 3792 | | 36,3 | 3502-B | | |

| Design | Colour | Code | Acoustic | LRV | NCS | |
|--------|--------|-----------|----------|------|-----------|-----------|
| Poesy | | Allegorie | 8627 | | 24,8 | 3030-B10G |
| | | Ballade | 2747 | ● | 43,8 | 2005-Y50R |
| | | Ellipse | 2750 | ● | 45,1 | 2502-B |
| | | Litote | 2752 | ● | 15 | 6502-B |
| | | Lyrique | 2749 | ● | 16,6 | 6005-Y20R |
| | | Octave | 2152 | ● | 30,8 | 3020-Y80R |
| | | Ode | 8621 | ● | 50 | 1515-B50G |
| | | Refrain | 2748 | | 28,8 | 4005-Y50R |
| | | Rhapsody | 2501 | ● | 18,5 | 6010-B90G |
| | | Rime | 8626 | ● | 20,3 | 5020-B |
| | Slam | 2751 | | 30,7 | 4500-N | |
| | Sonate | 2151 | | 32,9 | 3030-Y50R | |

● Available as acoustic
All colours are available as compact

Gerflor products help you to age well

These days, ageing well is a social challenge. In this context, supporting people who have dementia is the focus of numerous discussions.

What is dementia? Dementia is a syndrome that occurs in numerous neurological diseases (one of the most well-known being Alzheimer's disease), caused by progressive degeneration of certain neurons. These pathologies affect the memory, thoughts, behaviour and the ability to perform daily activities.

Gerflor is committed to helping towards ageing comfortably by developing designs and colours to suit these medical conditions.

Below are some key points for choosing a suitable flooring



Contrasting colours

Sections of the same area (floors, walls, accessories) must be in contrasting colours in order to improve the three-dimensional perception of the different spaces and thus encourage movement. It is also important to take into account the light reflectance value (LRV*) of the different sections.

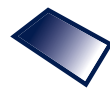
> **All the LRVs in Gerflor ranges are available on our website and our communication tools.**



'Soft' and almost plain patterns

Heavily patterned flooring or flooring with busy patterns should be avoided, as well as the colour black, which could lead to blocking reactions due to visual barriers. We therefore recommend choosing soft patterns.

> **Many designs and colours in Gerflor's ranges have semi-plain or almost plain patterns that are perfectly suitable.**



Matt flooring

In addition to the more realistic look, matt flooring is perceived as more secure. In fact, shiny floors can look wet, making people with dementia hesitant and increase the risk of falling.

> **The latest-generation surface treatments developed by Gerflor (Protecsol® 2, Evercare™ in particular) give the products a matt appearance.**



Acoustic comfort

You should opt for acoustic products that will reduce ambient noise and create a more calm and peaceful environment.

> **Many of the Gerflor collections provide sound insulation. For example, Premium offers sound insulation up to 17 dB (acoustic sheet) and 8 dB (compact sheet).**



Accredited Solutions

Gerflor sought to validate and accredit its solutions (notably Taralay Premium) through the DSDC, the **Dementia Services Development Centre**. This organization is an independent and internationally recognized center of knowledge and expertise, dedicated to improving the lives of people with dementia.

| Desing | Colour | Code | DSDC |
|----------|-----------|------|------|
| | Alvorada | 0051 | 1b |
| | Aracaju | 0058 | 1b |
| | Barueri | 0054 | 1b |
| | Boa Vista | 8386 | 2 |
| | Ceara | 3709 | 2 |
| Brazilia | Limeira | 0053 | 1b |
| | Maceio | 4477 | 2 |
| | Natal | 0056 | 1b |
| | Olinda | 0052 | 1b |
| | Paraiba | 3707 | 2 |
| | Recife | 8736 | 2 |
| | Teresina | 0055 | 1b |
| | Crinolin | 0030 | 2 |
| | Flannel | 0029 | 2 |
| Cocoon | Muslin | 0027 | 2 |
| | Organza | 0028 | 2 |
| | Satin | 0032 | 2 |
| | Bali | 8150 | 2 |
| | Calero | 4052 | 2 |
| | Comores | 4050 | 2 |
| | Cubagua | 4046 | 2 |
| | Dalupiri | 4045 | 2 |
| | Diwaran | 4053 | 2 |
| | Faroe | 7517 | 2 |
| Indiana | Fidji | 8226 | 2 |
| | Kilmia | 4049 | 2 |
| | Malabo | 4048 | 2 |
| | Manua | 4002 | 2 |
| | Maraca | 4051 | 2 |
| | Ofu | 4001 | 2 |
| | Okuza | 4047 | 2 |

| Desing | Colour | Code | DSDC |
|---------|-------------|------|------|
| | Tao | 4003 | 2 |
| Indiana | Tokelau | 4343 | 2 |
| | Tufoa | 4009 | 2 |
| | Wattaru | 4476 | 2 |
| | Alpaga | 4365 | 1b |
| | Angora | 4349 | 2 |
| | Awara | 4380 | 2 |
| | Barbadine | 4384 | 2 |
| | Cyclades | 4382 | 2 |
| | Greige | 4351 | 2 |
| Osmoz | Igloo | 4378 | 1b |
| | Ivory | 4364 | 2 |
| | Jasmin | 4383 | 2 |
| | Koudou | 4379 | 2 |
| | Pepper Grey | 7737 | 2 |
| | Rozelle | 4381 | 2 |
| | Slate Grey | 3791 | 2 |
| | Storm Grey | 3792 | 1b |



The DSDC Accredited product logo is awarded on the merit of the individual product and colourway. This accreditation does not merit the final application. Whilst every endeavor has been made to ensure the ratings are reflective of the product's suitability and applied use at the time of print, DSDC cannot be held responsible for the application of the final product, its performance or its interface with other products or finishes.

*LRV: Light Reflectance Value

